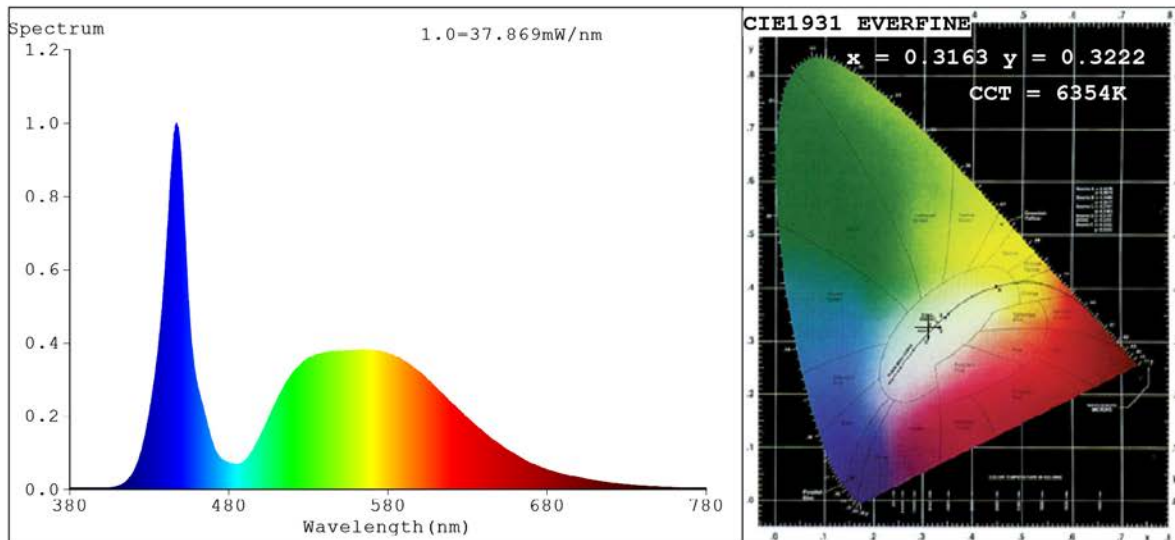


Spectrum Test Report



Color Parameters:

Chromaticity Coordinate: $x=0.3163$ $y=0.3222$ $u'=0.2029$ $v'=0.4652$
 $CCT=6354K$ ($Duv=-0.0022$) Dominant WL: $L_d = 482.8nm$ Purity=6.7%
 Ratio: R=12.9% G=83.5% B=3.6%; Peak WL: $L_p=447.1nm$ FWHM=16.6nm
 Render Index: $R_a=72.9$ CRI=64.2 TM30: $R_f=69$ $R_g=95$
 R1 =73 R2 =75 R3 =75 R4 =76 R5 =74 R6 =67 R7 =79
 R8 =64 R9 =0 R10=40 R11=75 R12=43 R13=72 R14=86 R15=69

Photo Parameters:

Flux = 878.7 lm Eff. : 90.66 lm/W $F_e = 2.767$ W

Electrical parameters:

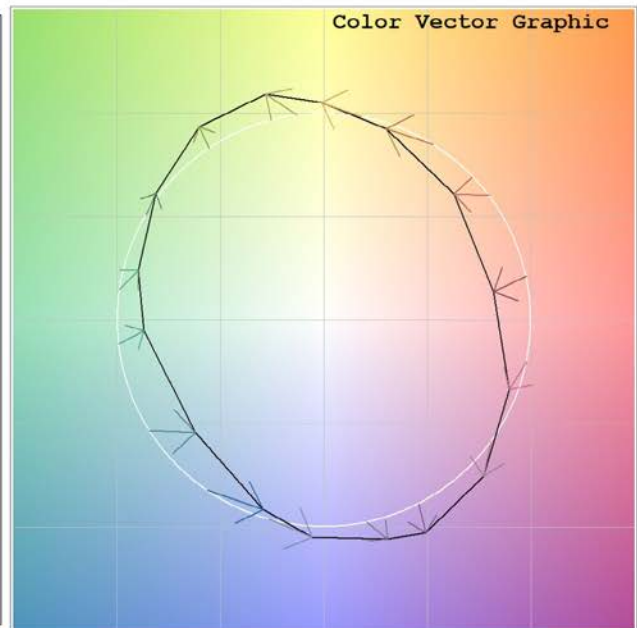
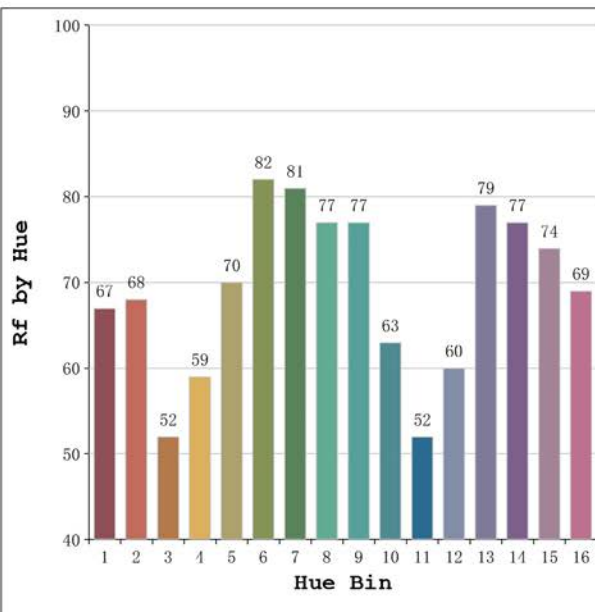
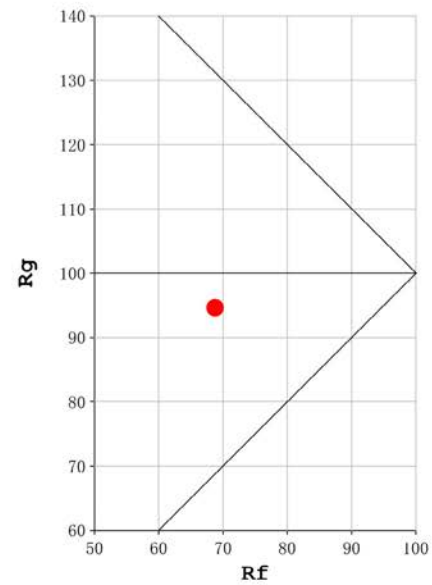
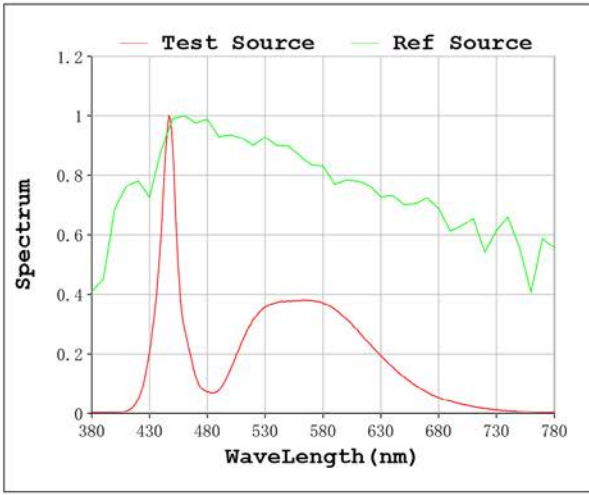
$V = 23.998$ V $I = 0.4039$ A $P = 9.693$ W PF = 1.000

Status: Integral T = 909 ms $I_p = 42815$ (65%)

Model: Ecoled Vizcaya 6500K
 Tester: M^a Angeles
 Temperature: 6500Deg
 Manufacturer: Luz Negra

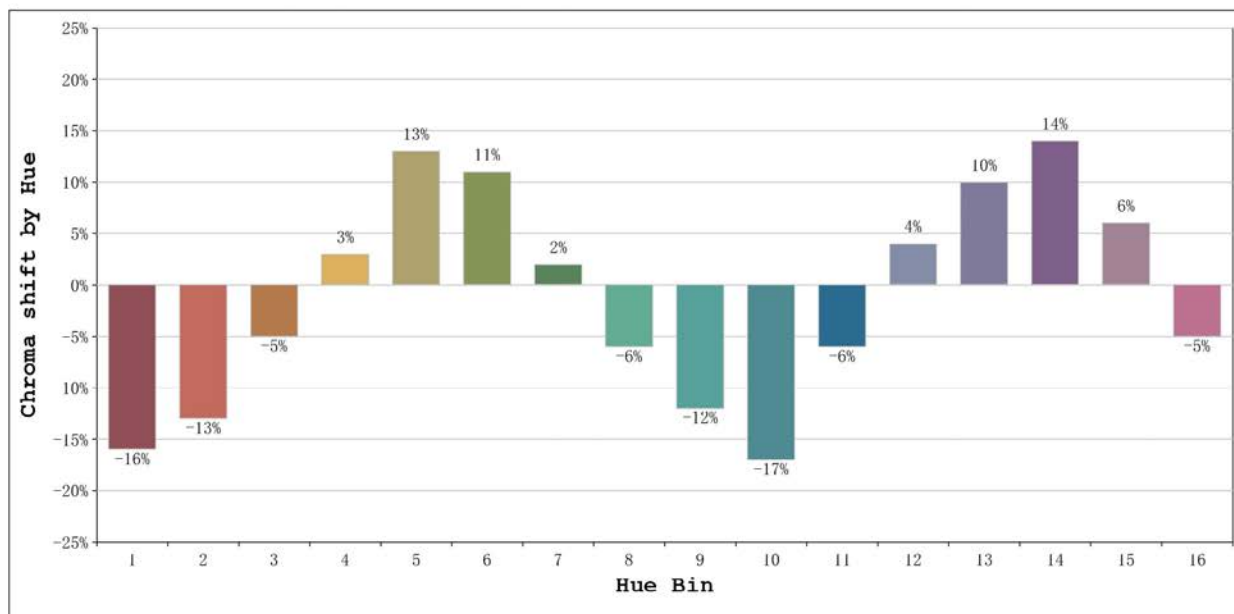
Number: 33.020
 Date: 2024-04-08 16:18:38
 Humidity: 40%
 Remarks: 100cm tira flexible

Rf: 69 **CCT: 6354 K** **u': 0.2029**
Rg: 95 **Duv: -0.0022** **v': 0.4652**



Model:Ecoled Vizcaya 6500K
 Tester:Mª Angeles
 Temperature:6500Deg
 Manufacturer:Luz Negra

Number: 33.020
 Date:2024-04-08 16:18:38
 Humidity:40%
 Remarks:100cm tira flexible



			Graphic shift(%)	
Hue Bin	Hue Angle	Rf	Chroma	Hue
1	0.0° - 22.5°	67	-16	-3
2	22.5° - 45.0°	68	-13	10
3	45.0° - 67.5°	52	-5	23
4	67.5° - 90.0°	59	3	21
5	90.0° - 112.5°	70	13	13
6	112.5° - 135.0°	82	11	-1
7	135.0° - 157.5°	81	2	-10
8	157.5° - 180.0°	77	-6	-10
9	180.0° - 202.5°	77	-12	-3
10	202.5° - 225.0°	63	-17	13
11	225.0° - 247.5°	52	-6	28
12	247.5° - 270.0°	60	4	22
13	270.0° - 292.5°	79	10	8
14	292.5° - 315.0°	77	14	-4
15	315.0° - 337.5°	74	6	-15
16	337.5° - 360.0°	69	-5	-14

Model:Ecoled Vizcaya 6500K
 Tester:MªAngeles
 Temperature:6500Deg
 Manufacturer:Luz Negra

Number: 33.020
 Date:2024-04-08 16:18:38
 Humidity:40%
 Remarks:100cm tira flexible